

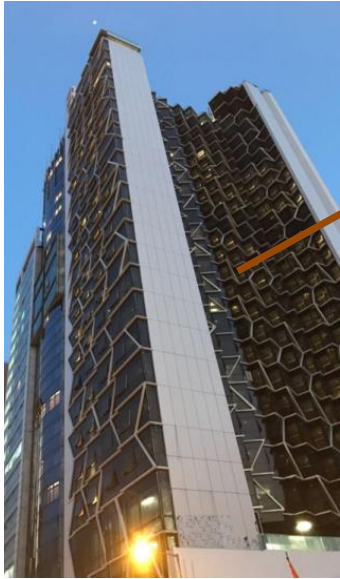


英皇娛樂酒店有限公司 Emperor Entertainment Hotel Limited

於百慕達註冊成立之有限公司 Incorporated in Bermuda with limited liability

Hotels and Serviced Apartments in Hong Kong

The Emperor Hotel in Wan Chai



A 29-storey hotel with a gross floor area of approximately 115,700 ft², which offers 299 guest rooms together with leisure, dining and parking facilities



A signature hotel under "Emperor" brand in Hong Kong



Golden Valley, a Cantonese & Sichuan cuisine in The Emperor Hotel, had been labelled as Michelin 1-star restaurant

The Unit Happy Valley in Happy Valley



21-storey composite building with G/F to 1/F devoted to retail use whilst upper floors accommodate 68 units

The Unit Morrison Hill in Wan Chai



12-storey composite building with G/F to 2/F devoted to retail/office uses whilst upper floors accommodate 18 stylish units

The Unit Davis in Kennedy Town



22-storey composite building with G/F devoted to retail use whilst upper floors accommodate 57 units

The Unit Soho in Central



25-storey composite building with 69 units. Occupancy permit was obtained in Jul. Pre-leasing will be kicked off in the near future



英皇娛樂酒店有限公司 Emperor Entertainment Hotel Limited

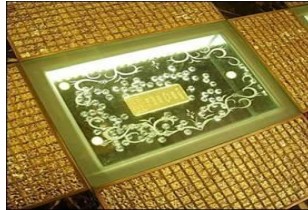
於百慕達註冊成立之有限公司 Incorporated in Bermuda with limited liability

Hotels in Macau

Grand Emperor Hotel (with gaming facilities) in Macau Peninsula



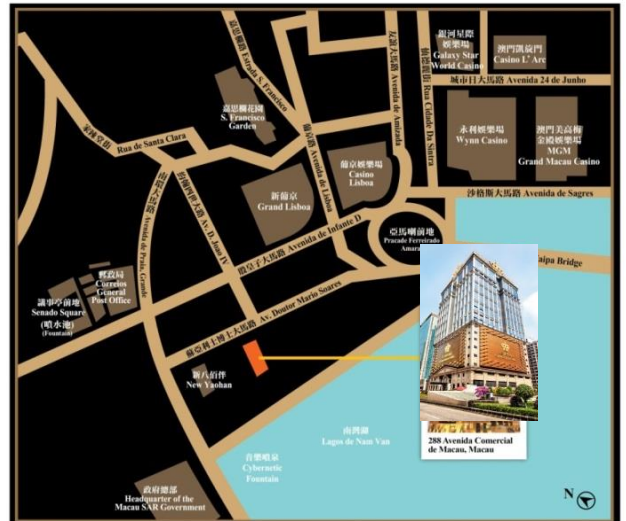
- 👑 Commenced in 2006, it is an award-winning hotel of 26 storeys with a gross floor area of approximately 655,000 ft² and 311 guest rooms
- 👑 "Emperor Palace Casino" occupies multi-floors with many mass gaming tables and slot machines
- 👑 Owned 80% by Emperor Entertainment Hotel and 20% by SJM
- 👑 Several retail spaces with a total of 5,500 ft² at hotel lobby being leased to Emperor Watch & Jewellery as point of sales



Lobby laden with 79 bars of 999.9 fine pure gold bars, each weighing 1kg



Inn Hotel in Taipa, Macau



- 👑 A 17-storey hotel with total GFA of approximately 209,000 ft², offering 285 guest rooms, swimming pool, spa and retail spaces
- 👑 Located at the heart of Taipa Island, Macau, it is adjacent to the popular tourist spots with guarantee traffic



英皇娛樂酒店有限公司 Emperor Entertainment Hotel Limited

於百慕達註冊成立之有限公司 Incorporated in Bermuda with limited liability

Financial Summary

HK\$'000	FY2021/22	FY2022/23	FY2023/24	Changes
Total Revenue	415,894	291,119	789,262	+ 171.1%
Hotels and Serviced Apartments	155,313	203,379	330,112	+ 62.3%
Gaming	260,581	87,740 ¹	459,150	+ 423.3%
Gross Profit/(Loss)	(83,267)	(115,689)	307,849	Turnaround
Underlying Profit / (Loss) ²	(261,622)	(177,779)	85,096	Turnaround
Net Profit / (Loss)	(644,245)	(127,997)	62,831	Turnaround
Basic Earnings/(Loss) Per Share	HK\$(0.44)	HK\$(0.08)	HK\$0.05	N/A

¹ The gaming operation was run by SJM between 27 Jun and 31 Dec 2022, hence no gaming revenue was recorded in that period.

² Represents net profit / (loss) before fair value changes, impairment losses reversed and their relevant deferred taxes.

Emperor Entertainment Hotel recommended the payment of a final dividend of HK\$0.015 (2023: Nil) per share in FY2023/24.

Balance Sheet Position

HK\$'000	@31 Mar 2022	@31 Mar 2023	@31 Mar 2024
Non-current Assets	3,900,534	4,270,952	4,157,013
Current Assets	1,129,889	566,763	705,371
Current Liabilities	(309,151)	(253,213)	(200,752)
Non-current Liabilities	(79,541)	(75,179)	(89,478)
Net Asset Value	3,794,415	3,691,812	3,752,697
Gearing Ratio	Zero *	Zero *	Zero *

* Since the Group was in a net cash position, its gearing ratio was zero.



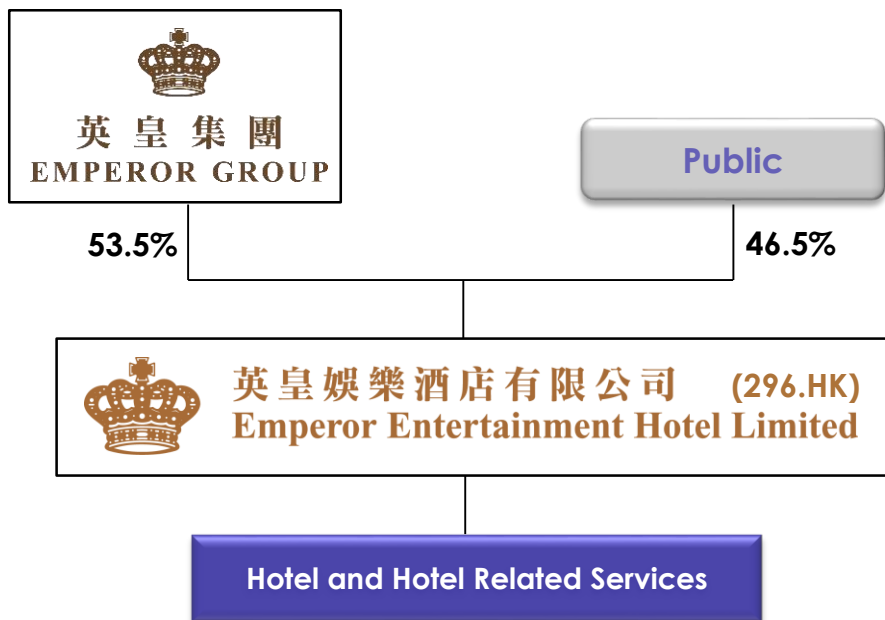
英皇娛樂酒店有限公司 Emperor Entertainment Hotel Limited

於百慕達註冊成立之有限公司 Incorporated in Bermuda with limited liability

Outlook

- 👑 The number of visitors arrival to Hong Kong and Macau kept upward trend. In light of the expanding middle class and increasing demand of entertainment and leisure service, it fuels the growth of tourism, hospitality and gaming sectors
- 👑 Backing up by an enhanced transportation link and a comprehensive tourism development plan within the Greater Bay Area, it will further strengthen the position of Hong Kong and Macau as an international shopping destination and a global resort hub, respectively, in the long-run
- 👑 As Hong Kong has remained the key gateway to China's capital markets, it has been well received by business travelers and MICE, laying a solid foundation demand for hotel rooms and serviced apartments near central districts

Corporate Structure @30 Aug 2024



Investor Relations Contacts

Anna Luk
Group IR Director
Direct Line: 852-2835 6783
Email: annaluk@emperorgroup.com

Janice Au
Group IR Manager
Direct Line: 852-2835 6799
Email: janiceau@emperorgroup.com